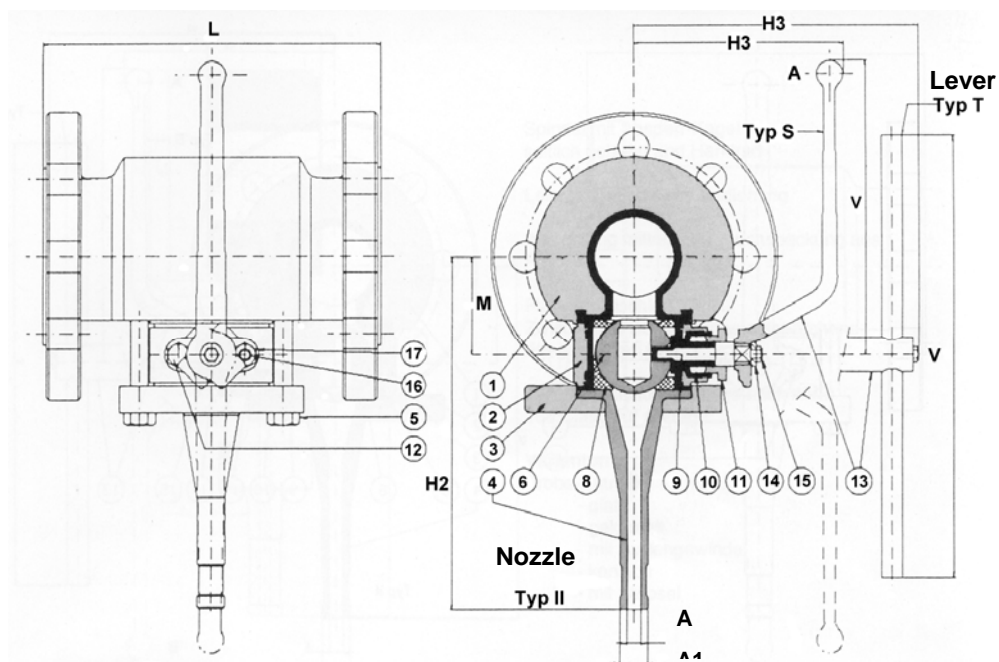


## Technische Dokumentation Technical Documentation



### Fully Lined Sampling Valves

## Fully Lined Sampling Valve with flanges PN 10 Type E901



### Parts description

Item	Qty.	Part	Material
1	1	Body	PFA
2	1	Sampling valve	EN-JS 1049 (0.7043, GGG 40.3) / PFA
3	1	Connection flange	XC18
4	1	End type II	Teflon®
5	4	Screw H	Stainless Steel A2-70
6	1	Ball	Teflon® + Glass
8	2	Seat	Teflon®
9	1	Stem	Z4CND17.04M/PFA
10	1	Packing	Teflon®
11	1	Gland	Z6CND18.12M
12	1	Screw H	Stainless Steel A2-70
13	1	Lever type T Lever type S	Steel MNI350-10
14	1	Washer	Z6CN18.09
15	1	Screw H	Stainless Steel A2-70
16	1	Stud	Stainless Steel A2-70
17	1	Nut	Stainless Steel A2-70

Operated by turning the lever to 180°

Position A: Sampling -- Position B: Collection of the sample

## Dimensions

Valve Size DN	Sampling Ball		L	H	H2	A	A1	H3	V	Lever Type
	Capacity	Size								
25	10 cm <sup>3</sup>	DN 25	200	44	187	8	16	120	170	S
40	10 cm <sup>3</sup>	DN 25	200	50	193	8	16	120	170	S
50	10 cm <sup>3</sup>	DN 25	200	56	199	8	16	120	170	S
50	100 cm <sup>3</sup>	DN 50	200	71	241	12	20	158	200	S
80	10 cm <sup>3</sup>	DN 25	200	72	215	8	16	163	250	T
80	100 cm <sup>3</sup>	DN 50	200	85	255	12	20	158	200	S
100	10 cm <sup>3</sup>	DN 25	200	87	230	8	16	163	250	T
100	100 cm <sup>3</sup>	DN 50	200	96	266	12	20	158	200	S
150	10 cm <sup>3</sup>	DN 25	200	112	255	8	16	195	250	T
150	100 cm <sup>3</sup>	DN 50	200	128	298	12	20	220	300	T

### Available lining materials: PFA or PVDF

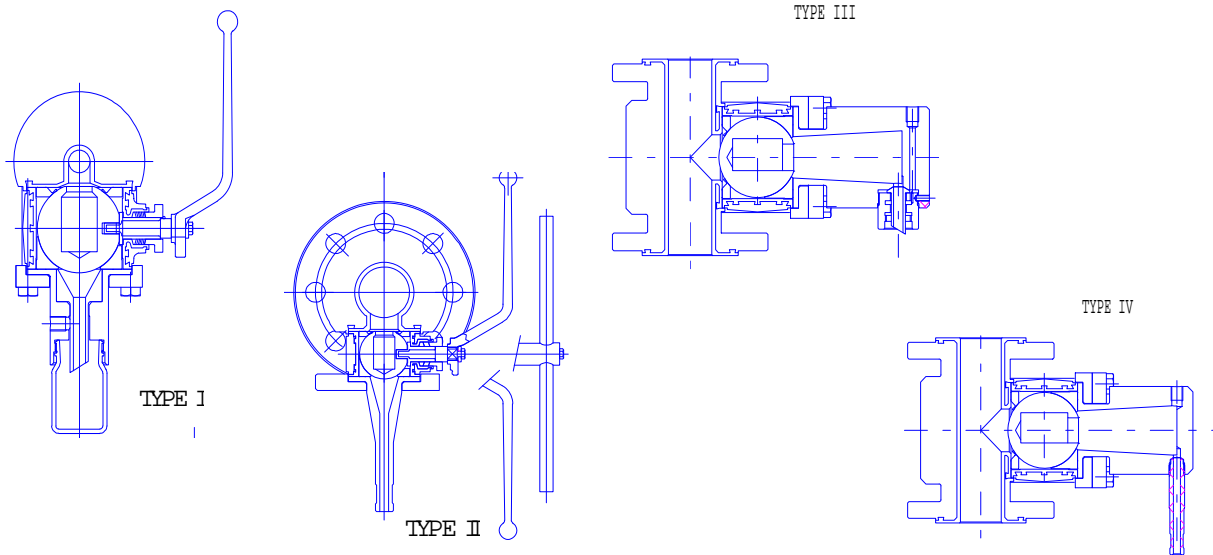
Safety sampling valve to be used in vacuum conditions and under pressure

- P max. 10 bar
- T max. 150 °C

Operated by turning the lever to 180°      Position A: Sampling    --    Position B: Collection of the sample

### End Nozzles (Item 4):

- Type I      to take samples with threaded glass bottle
- Type II     direct end nozzle
- Type III    to take samples with threaded glass bottle from E901 sampling valve when fitted in vertical position
- Type IV    to take samples with direct nozzle from E901 sampling valve when fitted in vertical position.





**Product Options :** Jacketed ball valve

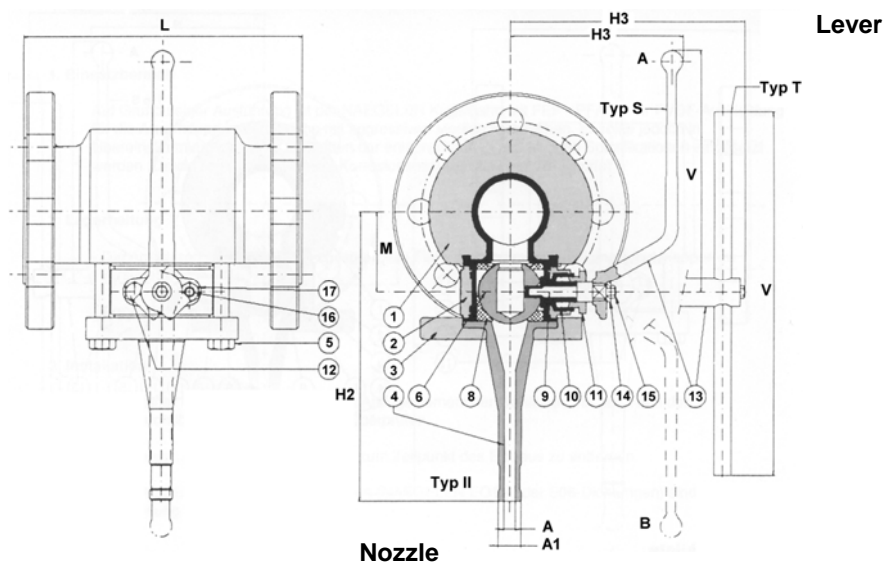
### How to order ?

In order to simply and precisely define XOMOX ball sampling valves and end nozzle, please specify as follows:

Valve type	E901, E902, V901, V902
DN	Nominal valve diameter
Connection flanges type	PN10, PN 16, ...
Lining material	PFA, PVDF
Sampling capacity	Sampling volume which can be collected in one valve operation (10 cm <sup>3</sup> , 100 cm <sup>3</sup> ) or other capacity
When special capacity needed	Please specify in detail
Type of outlet nozzle	Standard Type I, II, III, IV or other type.
If type I or III	Please specify bottle treaded part type. Best is to send to your nearest XOMOX office, as a sample, a bottle, similar to those will be fitted to the sampling valve
For Jacketed valve	Please specify type and pressure-temperature data for heating product as well as type and sizing of jacket nozzle connections.

When a spare part is required, please ask for it using the XOMOX sampling valve code number, or give all the above mentioned information.

## Fully Lined Sampling Ball Valve with flanges ANSI Class 150 Type E902



### Parts description

Item	Qty.	Part	Material
1	1	Body	PFA
2	1	Sampling valve	EN-JS 1049 (0.7043, GGG 40.3) / PFA
3	1	Connection flange	XC18
4	1	End type II	Teflon®
5	4	Screw H	Stainless Steel A2-70
6	1	Ball	Teflon® + Glass
8	2	Seat	Teflon®
9	1	Stem	Z4CND17.04M/PFA
10	1	Packing	Teflon®
11	1	Gland	Z6CND18.12M
12	1	Screw H	Stainless Steel A2-70
13	1	Lever type T Lever type S	Steel MNI350-10
14	1	Washer	Z6CN18.09
15	1	Screw H	Stainless Steel A2-70
16	1	Stud	Stainless Steel A2-70
17	1	Nut	Stainless Steel A2-70

Operated by turning the lever to 180°

Position A: Sampling -- Position B: Collection of the sample

## Dimensions

Valve Size DN	Sampling Ball		L	H	H2	A	A1	H3	V	Lever Type
	Capacity	Size								
1"	10 cm <sup>3</sup>	DN 25	200	44	187	8	16	120	170	S
1 1/2"	10 cm <sup>3</sup>	DN 25	200	50	193	8	16	120	170	S
2"	10 cm <sup>3</sup>	DN 25	200	56	199	8	16	120	170	S
50	100 cm <sup>3</sup>	DN 50	200	71	241	12	20	158	200	S
3"	10 cm <sup>3</sup>	DN 25	200	72	215	8	16	163	250	T
3"	100 cm <sup>3</sup>	DN 50	200	85	255	12	20	158	200	S
4"	10 cm <sup>3</sup>	DN 25	200	87	230	8	16	163	250	T
4"	100 cm <sup>3</sup>	DN 50	200	96	266	12	20	158	200	S
6"	10 cm <sup>3</sup>	DN 25	200	112	255	8	16	195	250	T
6"	100 cm <sup>3</sup>	DN 50	200	128	298	12	20	220	300	T

### Available lining materials: PFA or PVDF

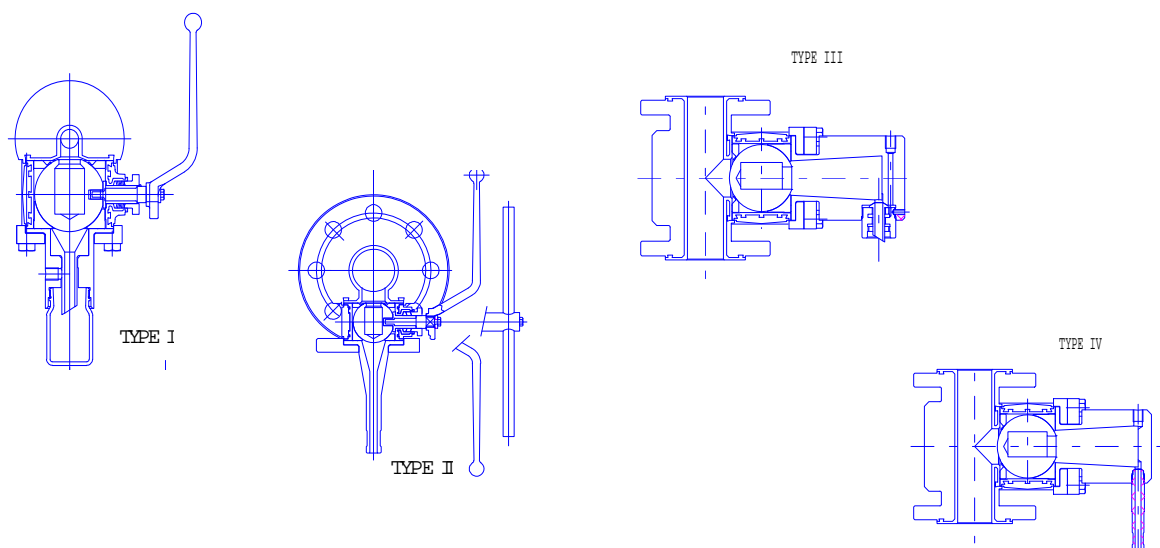
Safety sampling valve to be used in vacuum conditions and under pressure

- P max. 10 bar
- T max. 150 °C

Operated by turning the lever to 180°      Position A: Sampling    --    Position B: Collection of the sample

### END NOZZLES (Item 4):

- Type I      to take samples with threaded glass bottle
- Type II      direct end nozzle
- Type III      to take samples with threaded glass bottle from E902 sampling valve when fitted in vertical position
- Type IV      to take samples with direct nozzle from E902 sampling valve when fitted in vertical position.



**Product Options :** Jacketed ball valve



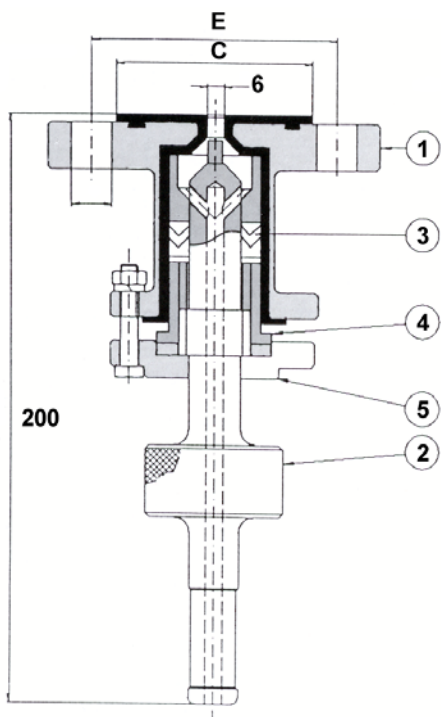
## How to order ?

In order to simply and precisely define XOMOX ball sampling valves and end nozzle, please specify as follows:

Valve type	E901, E902, V901, V902
DN	Nominal valve diameter
Connection flanges type	PN10, PN 16, ...
Lining material	PFA, PVDF
Sampling capacity	Sampling volume which can be collected in one valve operation (10 cm <sup>3</sup> , 100 cm <sup>3</sup> ) or other capacity
When special capacity needed	Please specify in detail
Type of outlet nozzle	Standard Type I, II, III, IV or other type.
If type I or III	Please specify bottle treaded part type. Best is to send to your nearest XOMOX office, as a sample, a bottle, similar to those will be fitted to the sampling valve
For Jacketed valve	Please specify type and pressure-temperature data for heating product as well as type and sizing of jacket nozzle connections.

When a spare part is required, please ask for it using the XOMOX sampling valve code number, or give all the above mentioned information.

## Fully Lined Drain Valve with needle-stem Type U111



### Design Features & Benefits

- Closing through needle-stem with axial boring and knurled handle
- Easy and quick operation
- Leak tightness by means of Teflon® stem packing
- Connection between flanges drilled to PN 10 acc. to the relevant size
- Connection to flanges acc. to ANSI Class 150 on request
- Other end pipe versions:
  - Smooth
  - Grooved
  - Threaded
  - Conic
  - With a cap

### Part Description

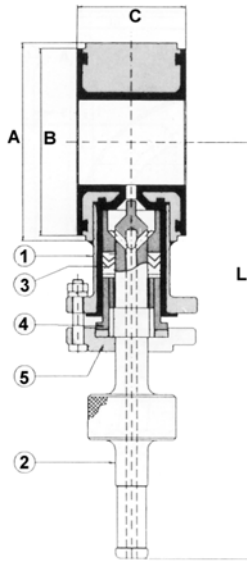
Item	Qty.	Part	Material
1	1	Body	Steel-PFA or PVDF
2	1	Needle-stem	Teflon®
3	1	Packing gland	Teflon® rings
4	1	Gland	Teflon®
5	1	Cover	Steel

### Dimensions

Size	A	B	C	Weight in kg
15	65	45	4 x 14	1.5
20	75	58	4 x 14	1.7
25	85	68	4 x 14	2.0



## Fully Lined Sampling Valve, with needle stem Type E100



### Design Features & Benefits

- Closing through needle-stem with axial boring and knurled handle
- Easy and quick operation
- Leak tightness by means of Teflon® stem packing
- Connection between flanges drilled to PN 10 acc. to the relevant size
- Connection between flanges acc. to ANSI Class 150 on request
- Other end pipe versions:
  - Smooth
  - Grooved
  - Threaded
  - Conic
  - With a cap

### Parts Description

Item	Qty.	Part	Material
1	1	Body	Steel + PFA or PVDF
2	1	Needle-stem	Teflon®
3	1	Packing gland	Teflon®-rings
4	1	Gland	Teflon®
5	1	Cover	Steel

### Dimensions

DN	A	B	C	L	Weight in kg
25	72	68	60	214	2.2
30	83	78	60	217	2.7
40	93	88	60	220	3.1
50	108	102	60	226	3.8
65	128	122	60	233	4.8
80	143	138	75	240	6.7
100	163	158	75	250	7.6

Available lining materials: PFA and PVDF

Subject to technical modifications.

Crane Co., and its subsidiaries cannot accept responsibility for possible errors in catalogues, brochures, other printed materials, and website information. Crane Co. reserves the right to alter its products without notice, including products already on order provided that such alteration can be made without changes being necessary in specifications already agreed. All their trademarks in this material are property of the Crane Co. or its subsidiaries. The Crane and Crane brands logotype are registered trademarks of Crane Co. All rights reserved.